



**[www.kings-group.net](http://www.kings-group.net)**

248 Hoe Street  
Walthamstow E17 3AX  
Tel: 020 8521 1122

**Leonard Road, London, E4 8NE**  
**£2,500 Per Month**



A completely renovated and refurbished mid-terraced Victorian style residence which is arranged over three levels.

The property has very modern and contemporary features and offers huge family accommodation with four bedrooms, two reception rooms, three bathrooms and impressive kitchen/diner with brand new appliances.

The property is situated within close proximity of Chingford Mount shopping facilities, good schools, excellent transport links and local parks.

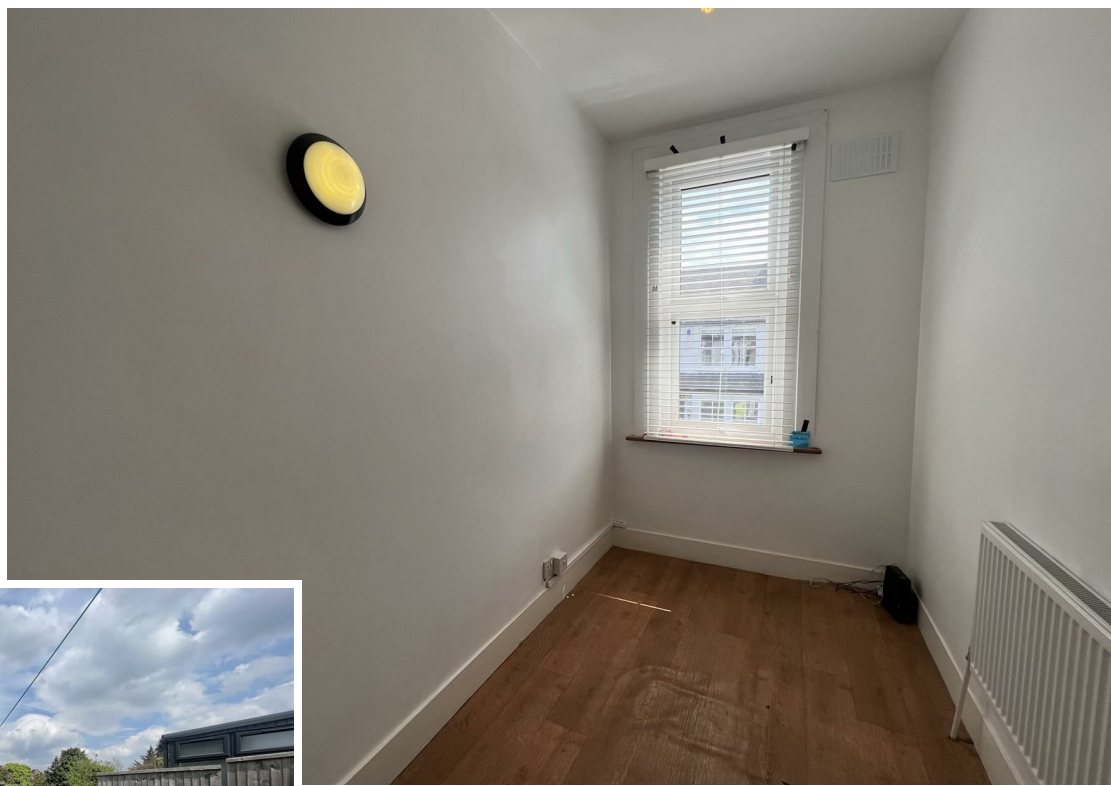
A highly recommended home which warrants an immediate inspection to appreciate the quality of craftsmanship that has been applied to this property.



Energy Efficiency Rating		
	Current	Potential
Very energy efficient - lower running costs		
(92 plus) A		
(81-91) B		
(69-80) C		
(55-68) D		
(39-54) E		
(21-38) F		
(1-20) G		
Not energy efficient - higher running costs		
England & Wales	EU Directive 2002/91/EC	

Environmental Impact (CO <sub>2</sub> ) Rating		
	Current	Potential
Very environmentally friendly - lower CO2 emissions		
(92 plus) A		
(81-91) B		
(69-80) C		
(55-68) D		
(39-54) E		
(21-38) F		
(1-20) G		
Not environmentally friendly - higher CO2 emissions		
England & Wales	EU Directive 2002/91/EC	











Associated Offices in London, Essex and Hertfordshire  
Kings Head Office Tudor Lodge, Burton Lane, Goffs Oak, Hertfordshire EN7 6SY Tel: 01707-872000

